

NEWSNOTE

VOLUME 1, ISSUE 14 DECEMBER 8, 2021

FROM THE PRINCIPAL'S DESK...

Happy Wednesday!

Thank you to everyone for supporting our fundraisers. Your efforts do make a difference and will continue to make a difference. Our Jesse Tree Food Drive continues through December 22. Your generosity has been overwhelming. We cannot thank you enough.

To get us in the Christmas spirit, next week we have some fun Christmas "special clothing" days planned. Please be sure to see the schedule of Christmas clothing fun that is coming home.

God's Peace and Love,
Mrs. Kwitowski



UPCOMING EVENTS:

- 12/8 - Immaculate Conception Mass, 8:30
- 12/10 - Polar Pals Gift Shop
- 12/15 - Report Card Upload, Gr K-8
- 12/20 - 10:45 Early Dismissal, **No After-school Care**
- 12/21-12/31 - NO SCHOOL Christmas Recess
- 1/3 - School Resumes
- 1/7 - Christian Witness Mass, 8:30am
- 1/14 - 10:45 Early Dismissal, No Afterschool Care
- 1/17 - **NO SCHOOL** - MLK Jr. Day
- 1/30 - Catholic Schools Week Begins



PARISH PASSAGE

Students, we need your help!

If you plan to attend the Christmas Eve children's mass in the Parish Center we need your help to build the crib. St. Lucy's Wheat is available upon request in the school office. The wheat is to be planted on Monday, December 13th. Please bring your bag of snipped wheat with you to mass and Fr. Paul will invite you to the altar to place it in the Manger.

BY THE NUMBERS

SCRIP:

From 11/30/21 to 12/6/21, the Scrip rebate profit earned towards tuition was \$2,096.08
Collectively, St. Mary's aims to sell \$30,000 in Scrip each month, with a monthly rebate goal of \$1,500.

November Sales to Date: \$92,387.00

Annual Rebate Profit to Date
(3/23-12/6): \$15,815.55

For November, we surpassed our monthly sales goal by \$62,387 and for December we are already \$2,400 over our goal!

CANDY BAR SALE:

Chocolate bars are just \$1.
Initial Order: \$7200.00
(Deficit)/Profit: (\$4650.00)
Update: Last week should have read as a deficit
Order Anytime:
<https://forms.gle/vfLmhrHoEG2PL8oG9>

FOOTBALL FRENZY:

First Game is December 12th! Good Luck!

CALENDAR CLUB:

Available until sold out or 12/31/21

12 DAYS OF CHRISTMAS:

Information & tickets went home 11/3
Ticket sales to date: 1,200
Orders are due by 12/17
Prizes drawn 12/25/2021 - 1/5/2022

POLAR PALS GIFT SHOP

Our shoppe will be open on Friday, December 10th!

Most of the items are in the \$1 - \$5 price range. Our team of pals will be there to assist our youngest shoppers navigate through our gift shop. Budget envelopes are coming home today for you & your child(ren) to make that list & check it twice!

Our Chair, Jenny Sparmo, is still looking for 1-2 more volunteers to help during the day &/or on Thursday evening when the shop is set up. If you are able to assist in any way please contact her directly at: Jennifersparmo@gmail.com or (716) 713-0719.



Donations are still accepted:

- scotch tape
- gift tags
- small gift bags
- medium gift bags
- bows

Items can be brought in anytime and left in the school office.

The Polar Pals Gift Shop is a cash only shop.

LIVING NATIVITY RECORDING

On Friday, we will be recording songs the students have been practicing to be incorporated into our Living Nativity which will stream on Monday 12/20.

PLEASE have your children come to school with/in appropriate outerwear as we will be doing the recording OUTSIDE.

Students are encouraged to wear Christmas hats/scarves etc. as well!

JESSE TREE

As of Friday 12/3 we have collected 810 items.

This week rounds out with applesauce, canned potatoes, cranberry sauce & canned beans. Weekend items can be brought in on Monday.

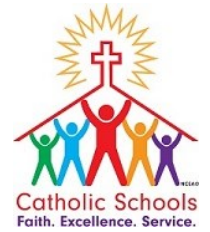
Did you know...

If each student brings just one item per day we will collect 250 of each item! Think of all the families we will be able to reach and help this holiday season! Of course, donations of more than one item are always appreciated!

We are beyond excited to have Bishop Mike come and bless all the items we collect before we donate them to our local food pantries.

Upcoming:

- | | |
|----------------------|----------------------|
| 8th applesauce | 16th dry milk |
| 9th canned potatoes | 17th canned soup |
| 10th cranberry sauce | 18th animal crackers |
| 11th canned beans | 19th canned corn |
| 12th crackers | 20th graham crackers |
| 13th rice | 21st canned carrots |
| 14th oatmeal | 22nd canned peas |
| 15th oil | |



INSIDE THIS ISSUE:

PRINCIPALS DESK	1
BY THE NUMBERS	1
POLAR PALS SHOP	1
JESSE TREE	1
PARISH PASSAGE	1
NURSE NOTES	2
SCRIP	2
PARISH PASSAGE	2
ART	2
CALENDAR CLUB	2
UNIFORMS	2
12 DAYS OF X-MAS	2
MEGA RAFFLE	2
COLD WEATHER	2
ABSENCES	2
CLOSURES	2
NURSE INFO	2
8TH GRADE INFO	2
STAY IN THE KNOW	2



ST. MARY'S ELEMENTARY SCHOOL

2 St. Mary's Hill
Lancaster, NY 14086

Phone: 716-683-2112
Fax: 716-683-2134
www.smeschool.com



UPON THIS HILL,
WE DO GOD'S WILL



SCRIP

All Scrip sales are in the Rectory on Mondays, Wednesdays-Fridays from 9:00-3:00. As stated in the information packet, if you send your order into school with your child, your order will be sent home as soon as it has been filled (some cards may need to be backordered).

Feel free to reach out with any questions: scrip@smeschool.com

Gift card updates:

- **The last order to guarantee delivery by Christmas was placed on Monday, December 6th.**
- Delta Sonic Oil Change gift certificates are no longer available.
- Dairy Queen, Sunoco & Gift Card Wrappers are unavailable until further notice.
- If you purchase Kohl's gift cards online, please be sure to select the option with (SME) after the denomination to get the 5% rebate. Otherwise, the rebate is only 4%.

- If you purchase Tops gift cards online, please be sure to select the **Tops Markets** option, not just Tops, to get the 5.5% rebate. Otherwise, the rebate is only 4%.

Thank you for your support of the Scrip program!

**Please remember to send in your brown Scrip envelope with your order. If you order online, please send your envelope in for us to return your order to you. Thank you!*

Insider tip... The best way to weigh down a gift card is with a Gertrude Hawk Candy Bar!!

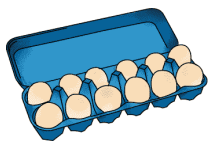


PARISH PASSAGE

There is still availability for your child(ren) to participate in presenting the ornaments for our Jesse Tree during our weekend masses!

<https://www.signupgenius.com/go/10C0F4DA8A72EA4F9C52-advent>

FROM THE ART ROOM



Collection of Styrofoam egg cartons is year round at SME and we appreciate the donations!

12 DAYS OF CHRISTMAS

The 12 Days of Christmas Raffle tickets are going great with 1,200 tickets sold as of 12/5!

Tickets are \$30 each, or 3/\$75.

This event is replacing our Fall Fest event, and sales of the tickets are paramount to reaching our fundraising goal. All families are asked to sell or purchase at least three tickets each.

Additional tickets are available in the rectory or by contacting our chairs.

Please return your stubs and payment before **December 17th**, along with any unsold tickets. Daily cash prizes will be awarded December 25, 2021-January 5, 2022. Winners will be contacted after January 5th.



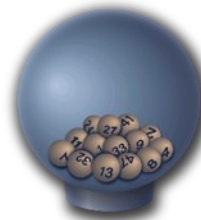
For more information, please contact the chairs: Amanda Barton & Jenny Sparmo at Jennifersparmo@gmail.com, or (716) 713-0719.

CALENDAR CLUB

Sales of the 2022 Calendar Club sponsored by St. Mary of the Assumption Parish & St. Mary's Elementary School are underway, and this year we are running two sets, A & B, so that more people can join in on the fun!

See the flier attached to the NewsNotes on October 6th for more information!

For more information, please contact Jessica Kulpit at jesskulpit@gmail.com.



MEGA RAFFLE

The time has come to begin planning for Mega Raffle 2022!

There are many volunteer opportunities available for various amounts of time (including work that can be done from home), and we also have open spots on the planning committee. If you are interested in joining our committee, or helping out with the event in any way, please contact Mary Kate DeMarzio at: megaraffle@smeschool.com.



Thank you to those that have already reached out to help. We will be in touch soon with more details!

STUDENT ABSENCES

Please do not forget to send in an excuse note for any missed days of school for your child(ren). Absences without excuses will result in a code of 'no note submitted' and is an illegal absence. If you do not recall a specific date of absence please feel free to reach out to your teacher or Mrs. Kuhn and we can get that information to you.

WINTER CLOSURES

In the event of the success of flushed ice cubes, inside out & backwards pajamas, shaking snow globes and other such traditions work you will know with:

- An email from Mrs. Kwitowski
- A school wide alert notification
- Good old fashion alphabetical scroll on the local news stations

Please keep in mind...

- If Lancaster Central is closed, so are we
- If only select buildings within Lancaster Central close, that does not mean that we are!
- We will be listed as St. Mary's Elementary School



NURSE NOTES

If your child is exhibiting any of the symptoms listed below, they will need a negative Covid test to return to school or a note from their provider stating otherwise.

These are guidelines set by the Department of Health.

- | | |
|--|-----------------------------|
| *Fever and/or chills (100 or higher) | *New loss of taste or smell |
| *Cough | *Sore throat |
| *Nausea or vomiting | *Fatigue |
| *Congestion/runny nose | *Diarrhea |
| *Shortness of breath or difficulty breathing | |
| *Muscle/Body aches | *Headache |

Thank you again for all of your understanding and patience during this time!

8TH GRADE INFO

1st Semester report cards will be forwarded onto catholic high schools (listed/checked off on your confirmation email received following your completion of the online catholic high school application) following the upload on December 15th.

UNIFORM REMINDERS

- No show socks are not allowed
- Shirts should be tucked in on all students
- Belts are a part of the dress code

Three non-compliance notices or warnings for dress code violations will automatically generate an after-school detention for that student.

As the cold weather approaches please remember that we will be keeping a window cracked in each of the classrooms. Please be sure your child has a uniform approved sweatshirt or sweater if need be. It is important that all layering clothing is labeled with your child's name in it. We already have a large amount of unlabeled clothing in our lost & found located in the gym.

NURSE INFO



Nurse Tara is available Monday - Friday from 9:30am until 1:00pm and can be reached at:

nurse@smeschool.com
683-2112 x128

<https://www2.erie.gov/health/sites/www2.erie.gov.health/files/uploads/pdfs/COVID19TestingResourcesforStudentsinErieCounty.pdf>

STAY IN THE KNOW



Save the Date: 12/20 10:45 Early Dismissal

Save the Date: 12/21-12/31 No School, Christmas Recess

Save the Date: 1/14 10:45 Early Dismissal

Save the Date:

Save the Date:

SME's Christmas Spirit Week!

Monday Dec. 13th – Monday Dec. 20th 2021

Monday 12/13

Wear your favorite holiday headwear! Santa hats, reindeer antlers, elf hats, festive headbands, etc. Please dress in **RED** and or **Green**, you may wear jeans (no rips or tears). NO leggings, yogas, or jogger pants.



Tuesday 12/14

Wear your Favorite Christmas movie character shirt! Grinch, Rudolph, Frosty, Santa, etc. You may wear jeans (no rips or tears). NO leggings, yogas, or jogger pants.



Wednesday 12/15

Flannel Shirt Day, you may wear jeans (no rip or tears). NO leggings, yogas, or jogger pants



Thursday 12/16

Bishop Fisher will be here today. This is a uniform day, but you may wear Christmas ties, scarfs, necklaces, and socks.



Friday 12/17

Dress in your BEST Christmas sweater/t-shirt. You may wear jeans (no rips or tears). NO leggings, yogas or jogger pants.



Monday 12/20

Dress up in your coolest Christmas Pajamas (no slippers, tank tops or shorts). Please make sure to bring a **SMALL blanket** to sit on and watch our "live" Living Nativity.

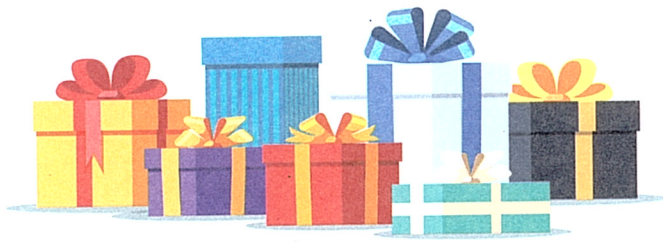


We really hope everyone participates in the dress up days during this special week!

If you choose not to dress in the Christmas attire during the week, you must wear your school uniform.

Merry Christmas!

KK



GIFT GUIDE ENVELOPES

Please indicate the maximum amount you wish your child to spend on each member of your family in the column marked "Budgeted Amount" and enclose cash or a check for the total amount. We will enter the amount spent in the column marked "Actually Spent" and place your change back in this envelope.

Please make check payable to the school group running the sale.

CHILD'S NAME:		
TEACHER or ROOM:		
A GIFT FOR . . .	BUDGETED AMOUNT	ACTUALLY SPENT
MOM		
DAD		
BROTHERS & SISTERS	AGE	
GRANDPARENTS		
TEACHER		
SELF		
AMOUNT ENCLOSED		
AMOUNT OF CHANGE ENCLOSED		